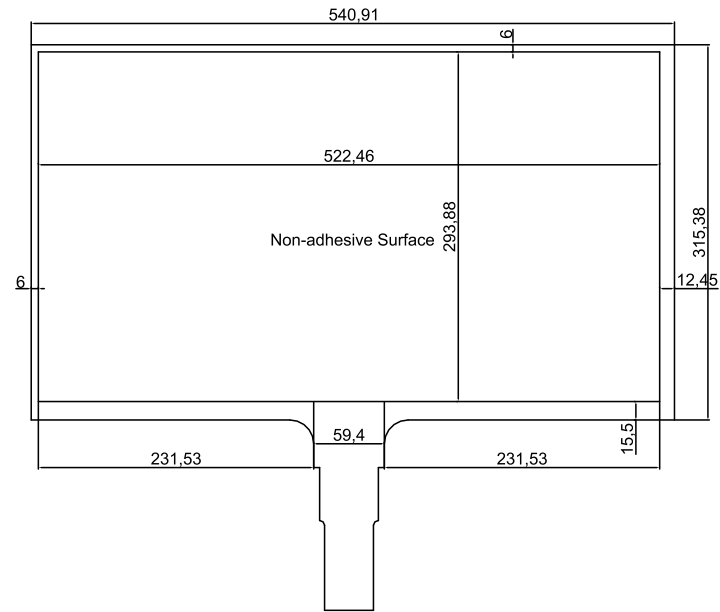
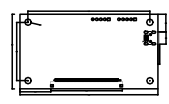


Ver.	Modify No.	Details	Area	P.I.C	Date
01	N01	P/N naming as per new rules	DZG, RMK	Curry	2021.08.16



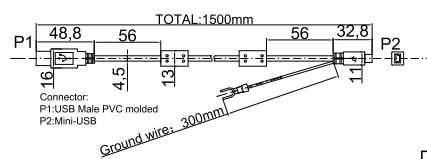
Golden Finger FRONT
Effective width:522.46;Effective height:293.88;Cutting width:540.91;Cutting height:315.38



Controller

Technical Datasheet:

1. Structure: Film+MCW+Film
2. Controller: MST-MCW-CTR-STM-23.6B
3. Channels: Tx/Rx: 24*48
4. Touch Points: 12 Points
5. All material used conform to RoHS standards



Part No.		MST-MCW-TFB-23.6-STM		
Master Touch Product Name: 23.6 inch Touch Foil		Drawing No.	M236B210816	
		Project Code.	M236B	
Business Unit: SNT-BTP		Period Mark	View Angle	Ratio
		A		1:3
BOM Code 1.11.236.02.0000		Page 1	Total 1 Page	
Product Series BTP-MCW		思诺泰科创电子(苏州)有限公司 SINOTECHNICS INC.		

Designed by:	Curry.Wang
Checked by:	Betty.Fu
Approved by:	Cale.Chen
Workmanship:	Jing.Chu
Standardization:	Link.Chen
Released by:	Rocky.Liu